

Lactation Support



Does a soon-to-be mom want to prepare to breastfeed?

Is your newborn patient having latch problems?

Does a new mom need help establishing her milk supply or maintaining her milk supply while away from her baby?

Individualized Breastfeeding Support from lactation consultants (IBCLC*) is now available to Alliance members! Support is given on the phone or in the home. Consultants have access to interpreter services.

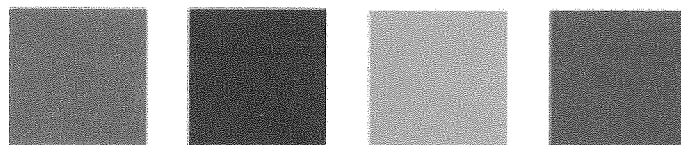
Alliance members call any of our lactation experts to request breastfeeding support:

- Tina Benitez, IBCLC: (510) 206-7080 (Spanish or English)
- Allana Samuel, IBCLC: 510-999-6455
- Brandi Gates, IBCLC: 510-372-3026
- Sylvia Boyd, PT, IBCLC: (510) 863-1537 (only by phone or in Hayward office)

**We want Alliance moms to succeed at breastfeeding!
Help us promote healthy babies & healthy moms!**



*IBCLC stands for International Board Certified Lactation Consultant



Parents don't have to do this alone! Find out more on classes and support for parents with newborns. Call Alliance Health Programs at **510-747-4577**.

Lactation Support



Does a soon-to-be mom want to prepare to breastfeed?

Is your newborn patient having latch problems?

Does a new mom need help establishing her milk supply or maintaining her milk supply while away from her baby?

Individualized Breastfeeding Support from lactation consultants (IBCLC*) is now available to Alliance members! Support is given on the phone or in the home. Consultants have access to interpreter services.

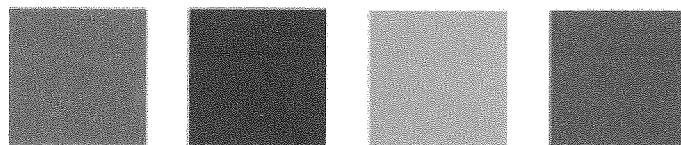
Alliance members call any of our lactation experts to request breastfeeding support:

- Tina Benitez, IBCLC: (510) 206-7080 (Spanish or English)
- Allana Samuel, IBCLC: 510-999-6455
- Brandi Gates, IBCLC: 510-372-3026
- Sylvia Boyd, PT, IBCLC: (510) 863-1537 (only by phone or in Hayward office)

**We want Alliance moms to succeed at breastfeeding!
Help us promote healthy babies & healthy moms!**



*IBCLC stands for International Board Certified Lactation Consultant



Parents don't have to do this alone! Find out more on classes and support for parents with newborns. Call Alliance Health Programs at **510-747-4577**.